

Thank you for being a Builder of Jewish Education!

Your support empowers BJE to provide Jewish educators and children with innovative approaches, cutting-edge skills, essential resources, and transformative educational programs to help them flourish. Your donations help BJE continually enhance the quality of, increase access to, and encourage participation in Jewish education throughout Greater Los Angeles. Thank you!

Landmark Conference: What's Next for Our Schools Post October 7th?



On April 1, BJE convened educational leaders from 35 different Jewish educational institutions for a landmark conference exploring how best to move forward in the post-October 7th environment. Educators from local part-time religious schools and day schools, as well as youth professionals and camp personnel, were joined by national experts invited by BJE to examine the impact of the terror attacks in Israel, war in Gaza and rise in antisemitism on Jewish peoplehood and identity. Working sessions on educational implications were led by colleagues from ADL, iCenter, Moving Traditions, OpenDor Media, Tzedek America, and author and professor Dr. Sivan Zakai and Dr. Lauren Applebaum (from the Rhea Hirsch School of Education at HUC-JIR), and psychologist Rabbi Dr. David Fox.

BJE Early Childhood Education Conference Grows from 450 to 650+

In March, BJE's 43rd annual Bebe Feuerstein Simon Early Childhood Institute drew more than 650 attendees for a day of professional development for teachers at Jewish early childhood centers. BJE's annual conference brings together educators from dozens of schools (this year, 32 of 48 BJE-affiliated early childhood education centers participated) for a day of learning, skills building and professional growth. The theme of this year's conference was "Chazakim B'Yachad - Stronger Together" and it was held at one of the HAMAKOM sites (formerly, Temple Aliyah).



The 2024 conference was developed in collaboration with The Paradigm Project, a national early childhood education organization that offers high quality, innovative professional development. The day featured active professional training sessions and workshops, as well as time set aside for networking, and for each school team to reflect, assess, and plan implementation of their new learning. A grant from JFEDLA contributed toward sponsoring BJE's collaboration with The Paradigm Project.



Helping Schools Reimagine Israel Education in a Changing World



Even before October 7th, L.A.'s Jewish schools sought BJE's help with Israel education to meet new needs and challenges, and to elevate the impact and value of Israel education for all school constituents. In response, BJE established an Israel Education Innovation Community of Practice (ICoP), a professional network to train a cohort of educators from BJE-affiliated part-time religious schools using the latest research and approaches. Training facilitated by Dr. Sivan Zakai of HUC-JIR, a field leader in Israel education, began in Fall 2023 and continued through the Spring of 2024.

In 2024-2025, BJE will support implementation initiatives. Participants in the ICoP will continue to meet to share their experiences and learn from one another's Israel education approaches and activities.



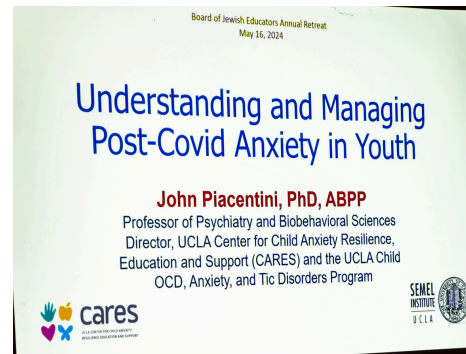
Thank you for being a Builder of Jewish Education!

BJE Leads 130 Teens and 55 Adults to Poland for 2024 March of the Living

In May, BJE led two delegations to Poland to join the International March of the Living. 130 high school seniors from 10 schools across Los Angeles (public, private, Jewish and secular) made up the BJE teen delegation. BJE's adult delegation of 55 participants was its largest adult group to date. Both BJE-led delegations experienced a very powerful week of learning and interaction with people and places that will be long remembered.



Summit on BJE's Positive Education Initiative for Educators & Students



On May 16, BJE convened educators who participated in BJE's multi-year training program to help BJE-affiliated schools relate to issues of well-being within and beyond the school, through positive education. 29 Jewish schools (early childhood, part-time religious schools and day schools) participated in extensive training in such topics as educating for resilience and developing positive relationships. The group assessed progress made, challenges overcome, and needs/visions for the future. This program was supported in great part by a generous grant from the Jewish Community Foundation of Los Angeles.

BJE is grateful to JFEDLA for a partnership grant toward support of BJE's March of the Living program for teens, as well as for BJE's work in strengthening Jewish day school and part-time Jewish education.

