

Outline



MAIN FOCUS/CONCERN

CURRENT STRATEGIES

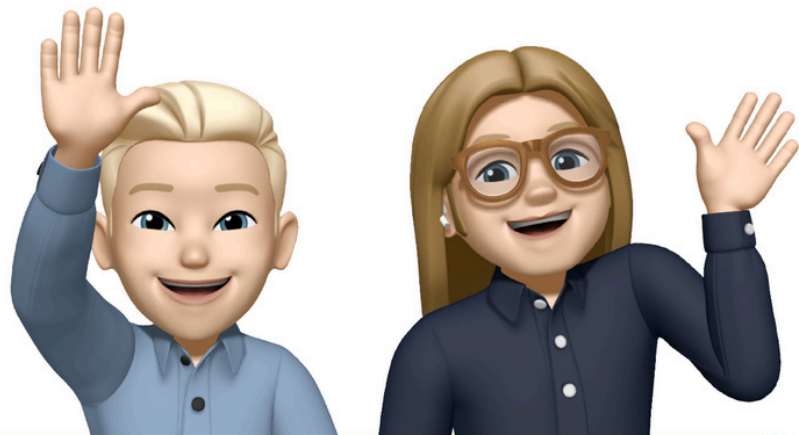
	Y	N
Parent/Student Plan	<input type="radio"/>	<input type="radio"/>
Sub Plans	<input type="radio"/>	<input type="radio"/>
Specialist Communication	<input type="radio"/>	<input type="radio"/>
Weekly Check-ins	<input type="radio"/>	<input type="radio"/>
Daily Teaching Plan	<input type="radio"/>	<input type="radio"/>
Student Visuals	<input type="radio"/>	<input type="radio"/>
Clear Roles/Expectation	<input type="radio"/>	<input type="radio"/>

STRATEGIES TO INCORPORATE:

1

2

3



Outline



TEAM SCENARIO

How can you start a discussion with your team?

What is the first step?

What strategies do you recommend?

How do you stay consistent?

